



**Make meaning with SENSE**

An International Network for Community Engagement



# Shaping Leaders of Tomorrow: Our Approach



Karlsruhochschule International University – or as we say: “The Karls” - is a state-accredited university of applied sciences based in Karlsruhe, Germany.



Our approximately 600 students learn from and with 90 professors and lecturers from various disciplines and industries. Around 50 % of the students are international.



We offer an interactive and (co-)creative approach to teaching and learning, with a focus on critical thinking, reflective learning and the personal development of our students.



The Karls is an international and intercultural hub for collaboration and experiential learning.



This is reflected through our classroom learning environment as well as our practical and collaborative approach towards management and social sciences.

## Laying tracks for the future

What if the leaders of tomorrow proactively and genuinely took responsibility for society?

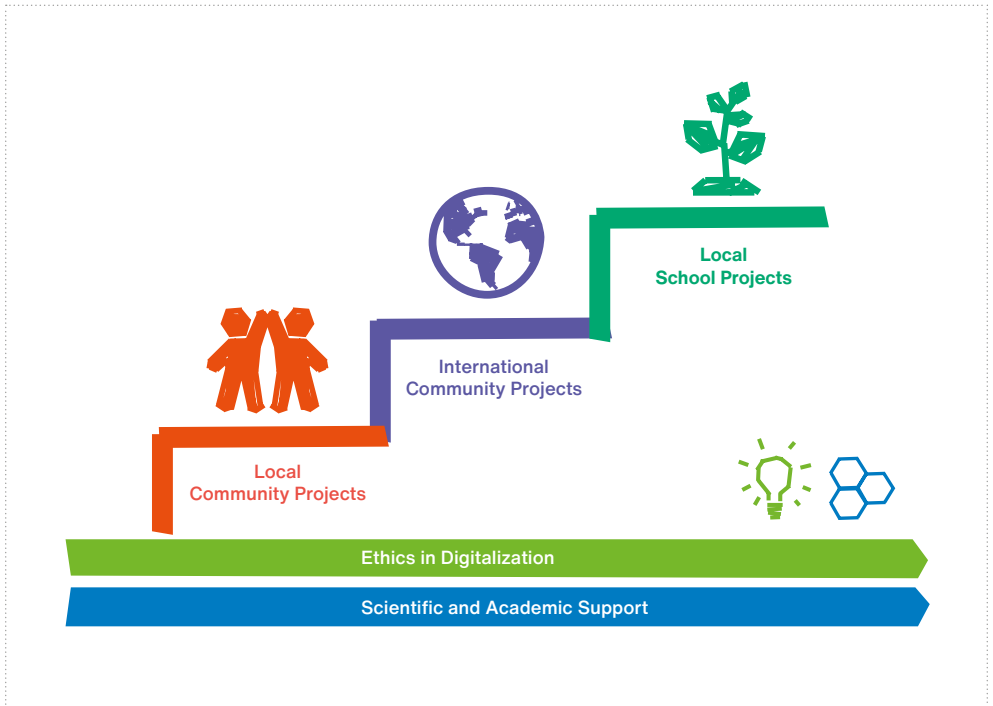
What if civil society organizations were supported by young people with relevant competencies and diverse perspectives?

The SENSE Center for Civic Engagement and Responsible Management Education at Karlsruhochschule aims to encourage students to become active global citizens and responsible leaders. Through concrete and practical opportunities included in their curricula, both in Karlsruhe and internationally, students sharpen their collaboration skills, their approach to problem solving and awareness for social justice – both locally and globally.

# Engagement without borders: International Community Projects

We use the pedagogical method of service learning, that combines academic content and reflective learning with a practical experience oriented to the common good. In addition, empowerment for a digital future is

one of our crosscutting offers to our students. Here, topics surrounding ethics in the age of technological advancement are discussed and deliberated.



## Share the vision: Let's make SENSE together

Are you a civil society organization, social/environmental initiative or similar?

We invite you to be our community partner! We believe that SENSE makes an important contribution to greater fairness, tolerance and understanding in our society. Therefore, we

look forward to worldwide reciprocal partnerships dedicated to a just and sustainable future.

Any organization that plays a role as a SENSE community partner, contributes meaningfully to shaping the minds of future leaders.

## 5 good reasons for cooperation:

- ✓ Motivated and committed students as an additional resource
- ✓ Opportunity to work on tasks that you otherwise have no time for
- ✓ Innovative problem solving with an academic background
- ✓ International perspective and multilingualism
- ✓ Potential for long-term networking with other institutions and influential actors



“

„It was a rewarding learning experience for our organization. SENSE encouraged us to think and reflect our mission and vision and how we should develop in the future. It was inspiring to meet an international trainee and we got new perspectives while getting to know how things are done in other countries.“

*Hanna Lämsä, Executive Director, Association of Cultural Heritage Education in Finland*

”





## The project at a glance

### Scope of Task

The students' task would cover a challenge faced by your organization, allowing them to make a meaningful contribution. We wish for considerate contact and integration of the student regarding their personal experiences and study background to maximize the benefit on both sides.

### Commitments

Depending on the scope of the task, students can work alongside your organization for a total of 40 hours, over the course of 3 to 4 months. The scope of the work should be elaborated in a written agreement between your organization and the student.

### Support

The SENSE Center supports the students and partners throughout the process. Students receive the necessary trainings and preparation to ensure a meaningful learning experience and partnership. Throughout the process, we welcome any questions and concerns you may have.

Service Learning combines academic learning with a practical experience in a civil society organization.



## We are interested. What's next?

SENSE sounds meaningful to you too? We are very thankful for your interest in collaborating with us. Please do not hesitate to contact us for any further information or to express interest in becoming our partner at:

## **SENSE**

Center for Civic Engagement and Responsible Management Education

**Prof. Annette Gisevius and Jedida Ravindran**

Phone: +49 721 48095-343

Email: [sense@karlshochschule.de](mailto:sense@karlshochschule.de)

Web: [www.karlshochschule.de](http://www.karlshochschule.de)